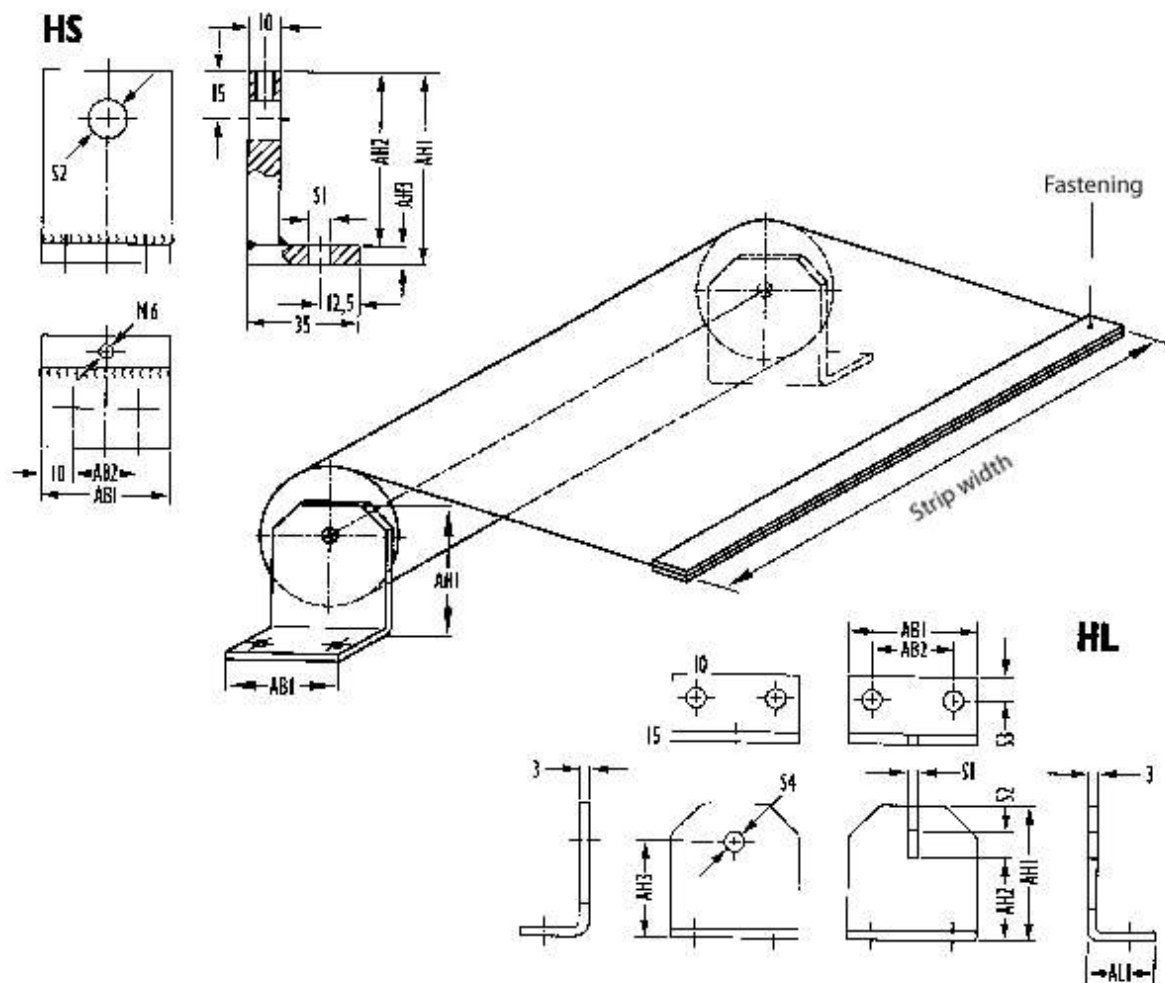


Rolling Covers – design information

Data for Standard Holders

Holder type	Rolling diameter	AH1/AH2/AH3	AB1/AB2	ALI	S1	S2	S3	S4
HL 21–28	21–28 mm	42/26/30	40/25	21	3	8	7,5	8
HL 30–35	30–35 mm	48/32/37	45/30	21	4	10	7,5	8
HL 40–50	40–50 mm	57/40/45	50/35	21	4	10	7,5	10
HL 50–60	50–60 mm	80/49/55	75/50	25	4	12	10	12
HS 40	40 mm	60/54/6	40/20	–	7	12	–	–
HS 45	45 mm	65/59/6	50/30	–	9	12	–	–
HS 50	50 mm	70/64/6	50/30	–	9	12	–	–
HS 60	60 mm	75/65/10	60/40	–	9	12	–	–
HS 70	70 mm	85/75/10	70/50	–	9	12	–	–
HS 80	80 mm	95/85/10	80/60	–	9	12	–	–
HS 90	90 mm	105/95/10	90/70	–	9	12	–	–
HS 100	100 mm	115/105/10	100/80	–	9	12	–	–

Series HL for normal, series HS for high demands; S2 corresponds to the axis diameter; special holders are supplied optionally; with type HS all edges are ready



Data in mm, variables see the table

Rolling Cover Drives

Constructional options	Roller with TF drive	Roller with SA drive	Roller with FM drive
Torsion spring drive	x		
Possibility of using a protective case	x	x	x
Possibility of using a side holder	x	x	x
Possibility of using an articulated screen	x		x
External plastic strip	x		x
External stainless steel strip		x	x
External strip of normal steel		x	x
Max. strip width (mm)	6 000	300	6 000*
Max. extensive length (mm)	8 000	10 000	10 000
Max. movement speed	90 m/min	60 m/min	50 m/min
Fast change of the running direction	x	x	Limited
Permanent load	Very high	Average	High
Sensitivity to pollution	Limited	Average	Limited
Reaction to tension force	Evan	Increased at full extension	Slightly increased at full extension
Product price	Low	Low	Average

* with plastic strip; steel strip up to 1,000

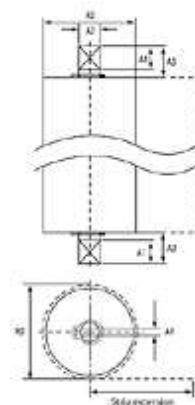
Data for Calculation of Rolling Axis

For technical determination of attachment of axes it is necessary to consider various parameters of the shutter diameter that are stated in the following table:

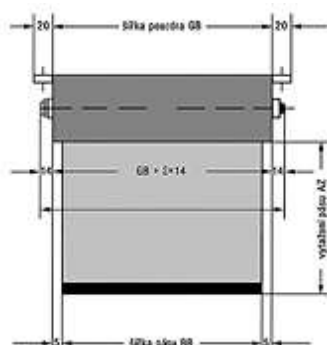
RD	A1	A2	A3	A4
21–28 mm	8 mm	8 mm	11 mm	3 mm
30–50 mm	8 mm	10 mm	11 mm	4 mm
nad 50 mm	8 mm	12 mm	11 mm	4 mm

Ending the strip is performed optionally using flat or angular steel laths that must be glued and riveted at one or both sides of strip ends.

For flawless functionality of the protective cover it is important to exactly enter the operating positions. Meanwhile it is very important from which side (front or rear) does the splinter flow and the coolant act.



Case Construction



Information for Design of the Protective Case and Drive

Strip width	Strip extension	Roller with TF drive without a case – rolling diameter	Roller with TF drive with a case - case diameter	Roller with FM drive without a case - rolling diameter	Roller with FM drive with a case - case dimensions	Roller with SA drive with a case - case dimensions
to 150	to 300	21/28*	40×40	40/50	60×60	40×40
to 150	to 500	21/30	50×50	40/50	60×60	50×50
to 150	to 1 000	30/32	60×60	45/50	70×70	60×60
to 150	to 1 500	50/60	80×80	50/60	80×80	70×70
to 150	to 2 000	–	–	60/70	90×90	75×75
to 150	to 2 500	–	–	70/80	110×110	80×80
to 150	to 3 000	–	–	80/90	120×120	90×90
to 150	to 4 000	–	–	90/100	130×130	100×100
to 150	to 5 000	–	–	100/120	140×140	110×110
to 150	to 7 000	–	–	120/133	150×150	120×120
to 150	to 9 000	–	–	120/133	160×160	120×120
to 150	to 10 000	–	–	120/150	170×170	120×120
to 300	to 300	21/28	40×40	40/45	60×60	40×40
to 300	to 500	21/28	50×50	50/60	70×70	50×50
to 300	to 1 000	30/32	60×60	50/60	70×70	60×60
to 300	to 1 500	40/45	70×70	50/60	80×80	70×70
to 300	to 2 000	50/60	80×80	60/70	90×90	75×75
to 300	to 2 500	50/60	80×80	70/80	100×100	80×80
to 300	to 3 000	60/70	90×90	80/90	110×110	90×90
to 300	to 4 000	70/80	100×100	90/100	120×120	100×100
to 300	to 5 000	80/90	120×120	90/100	130×130	110×110
to 300	to 7 000	–	–	100/120	150×150	120×120
to 300	to 9 000	–	–	100/120	160×160	140×140
to 300	to 10 000	–	–	120/150	170×170	150×150
above 300	to 300	21/28	40×40	40/45	60×60	–
above 300	to 500	21/28	50×50	45/50	70×70	–
above 300	to 1 000	30/32	60×60	45/50	70×70	–
above 300	to 1 500	40/45	70×70	50/60	80×80	–
above 300	to 2 000	50/60	80×80	60/70	90×90	–
above 300	to 2 500	50/60	80×80	70/80	110×110	–
above 300	to 3 000	60/70	90×90	80/90	120×120	–
above 300	to 4 000	70/80	100×100	80/100	130×130	–
above 300	to 5 000	80/90	120×120	90/100	140×140	–
above 300	to 7 000	90/100	130×130	100/120	150×150	–
above 300	to 9 000	100/120	150×150	100/120	160×160	–
above 300	to 10 000	100/120	150×150	120/150	170×170	–

*21/28 means rolling diameter 21 mm at normal a 28 mm at increased demands

Notes

- All dimensions are in mm,
- Special types and sizes upon request,
- The rolling diameter corresponds to the external diameter of the pipe.